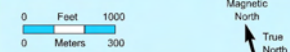


The Ives Trail and Greenway



Map Scale: 1 : 25,000
 Contour Interval: 25 meters
 Grid Interval: 1000 meters

Map is oriented to true north.
 Magnetic Declination (2021): 13.5° W
 Map Grid (red lines): UTM (WGS84)

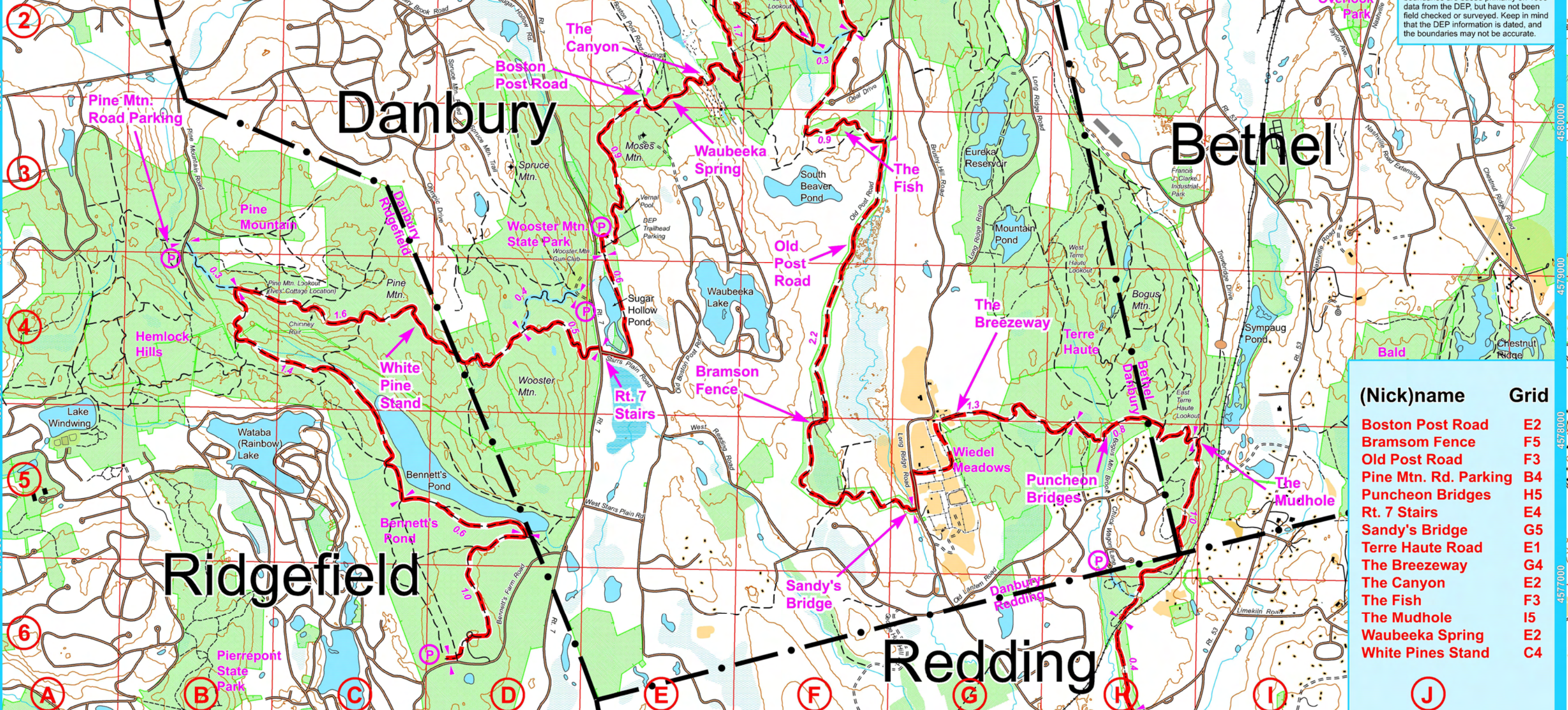
Field Survey and Drafting:
 Richard DeWitt: wrdewitt@snet.net

Basemap based primarily on data from the USGS and CT DEP, including LIDAR, DLGs, and digital orthophotos.

Last Update: 11/26/2021

Notes

- The existing Ives Trail is shown by this symbol:
- Alternative routes for the Ives Trail are shown by this symbol:
- IMPORTANT: Many sections of the Ives Trail are on private property. There are easements or permissions for these sections of trails; however, avoid straying off the established trail.
- Much of the land shown on this map is privately owned. The fact that a trail, path, property, etc. is shown on this map in no way implies any right of public access. Please respect the rights of property owners.
- Open space and municipally-owned lands are shown in green. The boundaries are based primarily on 1990 data from the DEP, but have not been field checked or surveyed. Keep in mind that the DEP information is dated, and the boundaries may not be accurate.



(Nick)name	Grid
Boston Post Road	E2
Bramson Fence	F5
Old Post Road	F3
Pine Mtn. Rd. Parking	B4
Puncheon Bridges	H5
Rt. 7 Stairs	E4
Sandy's Bridge	G5
Terre Haute Road	E1
The Breezeway	G4
The Canyon	E2
The Fish	F3
The Mudhole	I5
Waubeeka Spring	E2
White Pines Stand	C4